

Grammar

Thursday 30th April 2020

WALT To use adverbs and adverbial phrases to add description to verbs

Watch this short clip to learn what adverbs are and how they are used.

<https://www.bbc.co.uk/bitesize/articles/zv73bdm>



An **adverb** is a word that describes a verb (an action or a doing word).

Adverbs often end in -ly.

For example: He ate his breakfast quickly.

The word 'quickly' is an adverb as it tells us how he ate (the verb) his breakfast.

Where to place adverbs?

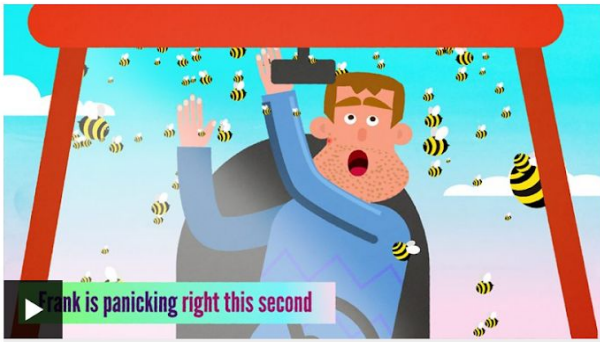
Adverbs can come before or after a verb.

He quickly ate his breakfast.

He ate his breakfast quickly.

By changing the place of adverbs in sentences it makes a piece of writing more interesting to read.

Watch the clip further down the page to learn about the difference between adverbs and adverbial phrases.



An **adverbial phrase** is like an adverb, it adds more information to the sentence, but it uses more than one word to describe the verb.

For example: The farmer drove the tractor in the evening.

Adverbs and adverbial phrases can describe how, when or where a verb is done.

How = The bees flew wildly.

When = The bees flew all of a sudden.

Where = The bees flew through the air.

Now complete the practice activity underneath

Practise

Activity 1

Highlight all the **adverbs** that are used in the sentences.

Remember: Adverbs describe a verb. If you find the verb, it's easier to find the adverb.

