

Friday 15<sup>th</sup> May 2020

Its' Friday :-)

Today we are going to complete our learning of the Bearded Dragon.

WALT - use retrieval skills to answer questions

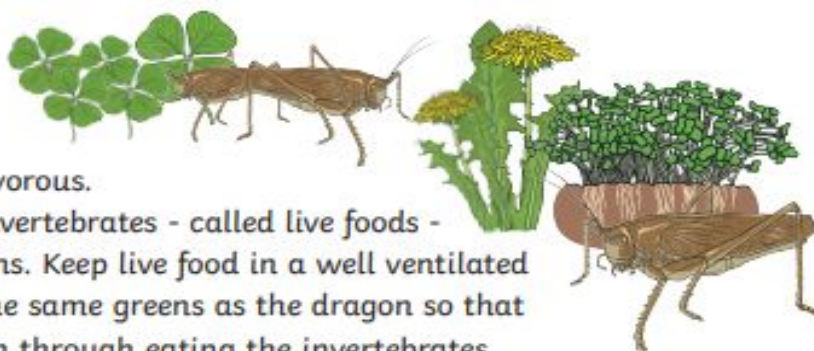
WALT - use inference skills to answers questions

## Pet Care of a Bearded Dragon

### Diet

Bearded dragons are omnivorous.

This means they eat live invertebrates - called live foods - and plants, known as greens. Keep live food in a well ventilated container and feed them the same greens as the dragon so that the lizard gets the nutrition through eating the invertebrates.



Safe Greens	Live Food
watercress rocket cress grated butternut squash dandelions clover plantain leaves	crickets locusts calciworms

If bearded dragons have spinach, it affects the dragon's ability to absorb calcium into their bodies.

### Feeding Tips

- Take out any uneaten live foods from the vivarium, as they can bite the lizard.
- Cover the live food with supplement powder to ensure the lizards get all of the nutrients they need.

## Two's Company

Bearded dragons are very territorial and will chase other males from their space. Females can fight if they are in groups - they have been known to bite the toes of other lizards and sometimes kill them!

### Signs of a healthy lizard:

- clear, bright eyes;
- thick base to their tail;
- hips will not be sticking out;
- bright colour after basking.

### Signs of calcium deficiency:

- muscle twitching;
- swollen legs;
- fragile bones;
- deformed limbs, spine, jaw.

### Sunbathing Lizard

A bearded dragon can be taken outside into the garden on sunny warm days to get natural UV light from the sun. Shade must be available and they must be constantly watched.

## Questions -

6. Explain why the live foods are given the same greens the dragon is given.

---

---

7. Give three examples of plants which can be fed to a bearded dragon.

---

---

8. Why do the uneaten live foods need to be removed from the vivarium?

---

---

9. Describe what the outcome might be if more than one female was kept in the vivarium.

---

---

10. Would you want to own a bearded dragon? Explain your thoughts.

---

---

# Answers

6. Explain why the live foods are given the same greens the dragon is given.  
**Live foods are given the same greens as the dragon because then the dragon will get the nutrition of the greens as well as the live food, when they eat it.**
7. Give three examples of plants which can be fed to a bearded dragon.  
**The bearded dragon can be given: watercress, rocket, cress, grated butternut squash, dandelion, clover and plantain leaves. (Accept any three).**
8. Why do the uneaten live foods need to be removed from the vivarium?  
**The uneaten live foods need to be removed from the vivarium because they might bite the bearded dragon.**
9. Describe what the outcome might be if more than one female was kept in the vivarium.  
**If more than one female was kept in the vivarium, they may fight and then they might bite each other's toes off, or even kill one another.**
10. Would you want to own a bearded dragon? Explain your thoughts.  
**Answers will vary.**