

Tuesday 30/6/20

Maths

Arithmetic – Adding Fractions

Watch this video if you have forgotten how to do it:

<https://www.youtube.com/watch?v=mO53rHEIQr4>

$$\frac{2}{6} + \frac{2}{6} =$$

$$\frac{1}{3} + \frac{2}{3} =$$

$$\frac{3}{6} + \frac{2}{6} =$$

$$\frac{7}{8} + \frac{2}{8} =$$

$$\frac{2}{4} + \frac{3}{4} =$$

$$\frac{2}{4} + \frac{2}{4} =$$

$$\frac{1}{2} + \frac{1}{2} =$$

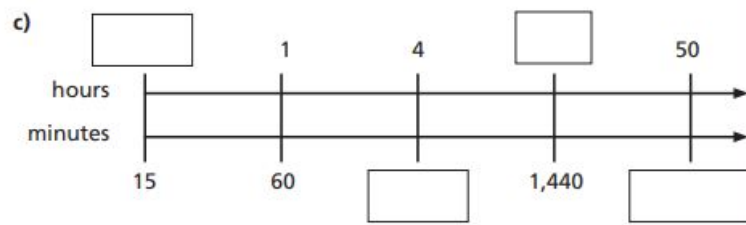
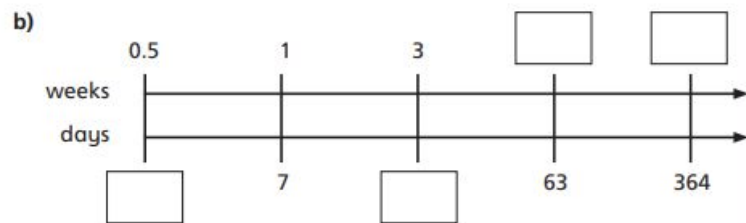
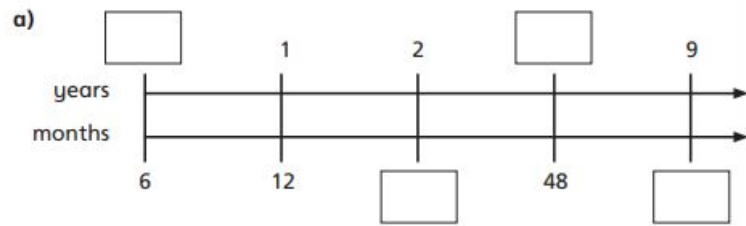
$$\frac{3}{4} + \frac{2}{4} =$$

$$\frac{82}{100} + \frac{70}{100} =$$

$$\frac{8}{10} + \frac{4}{10} =$$

WALT: Solve problems involving converting between units of time

3 Fill in the boxes to complete the conversions.



4 Complete the conversions.

a) 6 weeks = days

d) 3 days = hours

b) 7 years = months

e) weeks = 98 days

c) 5 minutes = seconds

f) minutes = 9 hours

Answers:

$$\frac{2}{6} + \frac{2}{6} = \frac{2}{3}$$

$$\frac{1}{3} + \frac{2}{3} = 1$$

$$\frac{3}{6} + \frac{2}{6} = \frac{5}{6}$$

$$\frac{7}{8} + \frac{2}{8} = 1 \frac{1}{8}$$

$$\frac{2}{4} + \frac{3}{4} = 1 \frac{1}{4}$$

$$\frac{2}{4} + \frac{2}{4} = 1$$

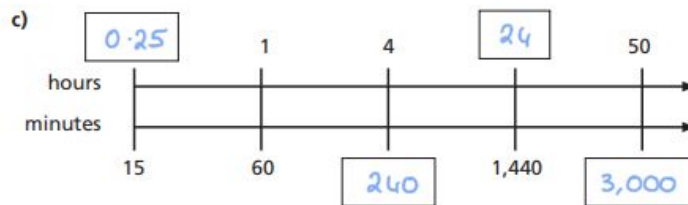
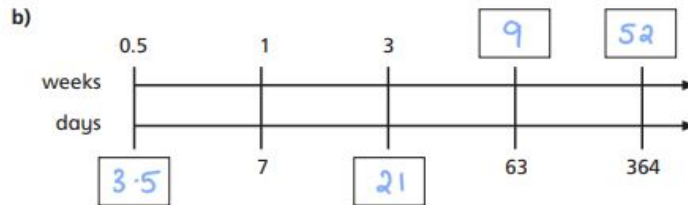
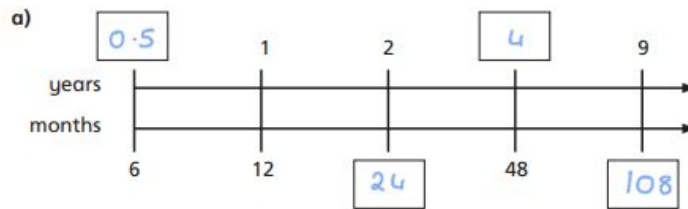
$$\frac{1}{2} + \frac{1}{2} = 1$$

$$\frac{3}{4} + \frac{2}{4} = 1 \frac{1}{4}$$

$$\frac{82}{100} + \frac{70}{100} = 1 \frac{13}{25}$$

$$\frac{8}{10} + \frac{4}{10} = 1 \frac{1}{5}$$

3 Fill in the boxes to complete the conversions.



4 Complete the conversions.

a) 6 weeks = 42 days

d) 3 days = 72 hours

b) 7 years = 84 months

e) 14 weeks = 98 days

c) 5 minutes = 300 seconds

f) 540 minutes = 9 hours